



A.M.A.L. COLLEGE

ANAKAPALLE- 531001. Ph.08924 220634

NAAC ACCREDITED B++ GRADE

Mail:amalcollegeakp1953@gmail.com, **web:**www.amalcollege.edu.in

Dr G.Jaya Babu, M.Sc,M.Phil., Ph.D.

PRINCIPAL (FAC) Ph.No.9490430638

THE INSTITUTION HAS FACILITIES AND INITIATIVES

- **Green and Plastic Free Campus policy Document**
- **Solar energy**
- **Use of LED Bulbs/by Power efficient equipment**
- **Solid Waste Management**
- **Vermicompost Unit**
- **Liquid Waste Management**
- **E- Waste Management**
- **Rain Water Harvesting**
- **Open Well**
- **Green Campus Initiatives**
- **Built Environment with Ramps**
- **Self-Propelling Wheel Chair**
- **Landscaping with Plants**
- **Ban on use of Plastic**
- **Circulars for Clean and Green Programs**
- **Report of activities for the implementation of initiatives**
- **Bills for purchase of Equipments**



Jana M.L.
PRINCIPAL
A.M.A.L. COLLEGE
ANAKAPALLE



A.M.A.L. COLLEGE

ANAKAPALLE- 531001. Ph.08924 220634

NAAC ACCREDITED B++ GRADE

Mail:amalcollegeakp1953@gmail.com, **web:**www.amalcollege.edu.in

Dr G.Jaya Babu, M.Sc,M.Phil., Ph.D.

PRINCIPAL (FAC) Ph.No.9490430638

GREEN AND PLASTIC FREE CAMPUS POLICY DOCUMENT



Gana M.L.
PRINCIPAL
A.M.A.L. COLLEGE
ANAKAPALLE



A.M.A.L. COLLEGE

ANAKAPALLE- 531001. Ph.08924 220634

NAAC ACCREDITED B++ GRADE

Mail:amalcollegeakp1953@gmail.com, **web:**www.amalcollege.edu.in

GREEN AND PLASTIC-FREE CAMPUS POLICY

Objective:

To establish and promote a sustainable and eco-friendly environment within the college campus, minimizing environmental impact through the reduction of plastic usage and the adoption of green practices.

POLICY GUIDELINES

Plastic-Free Campus:	A strict ban is to be implemented on single-use plastic items such as bags, bottles, and utensils within the campus premises. To encourage the use of reusable and eco-friendly alternatives, providing suitable facilities for water refill stations.
Waste Management:	To establish a comprehensive waste segregation system to ensure proper disposal of waste materials.
Green Infrastructure:	Foster green spaces by planting native trees, shrubs, and plants around the campus under the supervision of department of Botany in association with NSS and NCC units.
Energy Conservation:	Encourage energy-efficient practices, such as the use of LED lighting. Organize awareness programs to educate students and staff on energy conservation.
Sustainable Transportation:	Encourage the use of bicycles, public transportation, or carpooling among students and staff. Provide designated parking spaces for bicycles and electric vehicles, promoting sustainable commuting options.
Curriculum Integration:	Special focus on the papers environmental science and audit prescribed in the curriculum.
Community Engagement:	Collaborate with local environmental organizations and community groups to enhance green initiatives. Organize awareness campaigns, workshops, and events to engage students, faculty, and staff in sustainable practices.
Monitoring and Evaluation:	Department of Botany should review the greenery status of the campus and submit a report to the Principal for every three months. Institute special appreciations and mementos for actively participating students in green initiatives.
Partnerships:	Seek partnerships with eco-friendly businesses and suppliers to ensure the procurement of sustainable products and materials. Recognize and celebrate environmentally responsible practices through awards and incentives.



[Signature]
PRINCIPAL
A.M.A.L. COLLEGE
ANAKAPALLE



A.M.A.L. COLLEGE

ANAKAPALLE- 531001. Ph.08924 220634

NAAC ACCREDITED B++ GRADE

Mail: amalcollegeakp1953@gmail.com, **web:** www.amalcollege.edu.in

Dr G.Jaya Babu, M.Sc,M.Phil., Ph.D.

PRINCIPAL (FAC) Ph.No.9490430638

SOLAR ENERGY



Gana N. S.
PRINCIPAL
A.M.A.L. COLLEGE
ANAKAPALLE



A.M.A.L. COLLEGE

ANAKAPALLE- 531001. Ph.08924 220634

NAAC ACCREDITED B++ GRADE

Mail:amalcollegeakp1953@gmail.com, **web:**www.amalcollege.edu.in

Dr G.Jaya Babu, M.Sc,M.Phil., Ph.D.

PRINCIPAL (FAC) Ph.No.9490430638

SOLAR ENERGY

Solar energy is produced by the sun's light-photovoltaic energy offers many benefits that make it one of the most promising energy i. Renewable ii. Inexhaustible iii. Non-polluting iv. Avoids global warming v. Reduces use of fossil fuels vi. Reduces energy imports vii. Contributes to sustainable development. The Ministry of New ad renewable energy, Government of India has been promoting the aim to develop and deploy new and renewable energy for supplementing the energy requirement of the country.



SOLAR PLATE INSTALLED IN THE ROOF TOP OF ADMINISTRATION BUILDING



Gana M.L.S.
PRINCIPAL
A.M.A.L. COLLEGE
ANAKAPALLE



A.M.A.L. COLLEGE

ANAKAPALLE- 531001. Ph.08924 220634

NAAC ACCREDITED B++ GRADE

Mail:amalcollegeakp1953@gmail.com, **web:**www.amalcollege.edu.in

Dr G.Jaya Babu, M.Sc,M.Phil., Ph.D.

PRINCIPAL (FAC) Ph.No.9490430638



SOLAR PLATE INSTALLED IN THE ROOF TOP OF ADMINISTRATION BUILDING



Jana M.L.
PRINCIPAL
A.M.A.L. COLLEGE
ANAKAPALLE



A.M.A.L. COLLEGE

ANAKAPALLE- 531001. Ph.08924 220634

NAAC ACCREDITED B++ GRADE

Mail: amalcollegeakp1953@gmail.com, **web:** www.amalcollege.edu.in

Dr G.Jaya Babu, M.Sc,M.Phil., Ph.D.

PRINCIPAL (FAC) Ph.No.9490430638



SOLAR PLATE INSTALLED IN THE ROOF TOP OF ADMINISTRATION BUILDING CONNECTED TO SINGLE BOX



EARTH CONNECTION



Jana M.L.
PRINCIPAL
A.M.A.L. COLLEGE
ANAKAPALLE



A.M.A.L. COLLEGE

ANAKAPALLE- 531001. Ph.08924 220634

NAAC ACCREDITED B++ GRADE

Mail: amalcollegeakp1953@gmail.com, **web:** www.amalcollege.edu.in

Dr G.Jaya Babu, M.Sc,M.Phil., Ph.D.

PRINCIPAL (FAC) Ph.No.9490430638

USE OF LED BULBS/BY POWER EFFICIENT EQUIPMENT



Gana M.L.
PRINCIPAL
A.M.A.L. COLLEGE
ANAKAPALLE



A.M.A.L. COLLEGE

ANAKAPALLE- 531001. Ph.08924 220634

NAAC ACCREDITED B++ GRADE

Mail:amalcollegeakp1953@gmail.com, **web:**www.amalcollege.edu.in

Dr G.Jaya Babu, M.Sc,M.Phil., Ph.D.

PRINCIPAL (FAC) Ph.No.9490430638

USE OF LED BULBS/POWER EFFICIENT EQUIPMENT

LEDs use much less energy to provide the same amount of lights as other forms of lighting. LED bulbs are used in the college premises to save electricity.



AT SARASWATHI IDOL



AT MAIN GATE -I



Gana M.L.
PRINCIPAL
A.M.A.L. COLLEGE
ANAKAPALLE



A.M.A.L. COLLEGE

ANAKAPALLE- 531001. Ph.08924 220634

NAAC ACCREDITED B++ GRADE

Mail:amalcollegeakp1953@gmail.com, **web:**www.amalcollege.edu.in

Dr G.Jaya Babu, M.Sc,M.Phil., Ph.D.

PRINCIPAL (FAC) Ph.No.9490430638



AT MAIN GATE -2



AT MAIN GATE -2



Jaya M. B.
PRINCIPAL
A.M.A.L. COLLEGE
ANAKAPALLE



A.M.A.L. COLLEGE

ANAKAPALLE- 531001. Ph.08924 220634

NAAC ACCREDITED B++ GRADE

Mail:amalcollegeakp1953@gmail.com, **web:**www.amalcollege.edu.in

Dr G.Jaya Babu, M.Sc,M.Phil., Ph.D.

PRINCIPAL (FAC) Ph.No.9490430638



IN SUPERINTENDENT OFFICE



FROM MAIN GATE-1 TO MAIN GATE -2



Jaya Babu
PRINCIPAL
A.M.A.L. COLLEGE
ANAKAPALLE



A.M.A.L. COLLEGE

ANAKAPALLE- 531001. Ph.08924 220634

NAAC ACCREDITED B++ GRADE

Mail:amalcollegeakp1953@gmail.com,**web:**www.amalcollege.edu.in

Dr G.Jaya Babu, M.Sc,M.Phil., Ph.D.

PRINCIPAL (FAC) Ph.No.9490430638



AT BOYS HOSTEL



Jana M.L.
PRINCIPAL
A.M.A.L. COLLEGE
ANAKAPALLE



A.M.A.L. COLLEGE

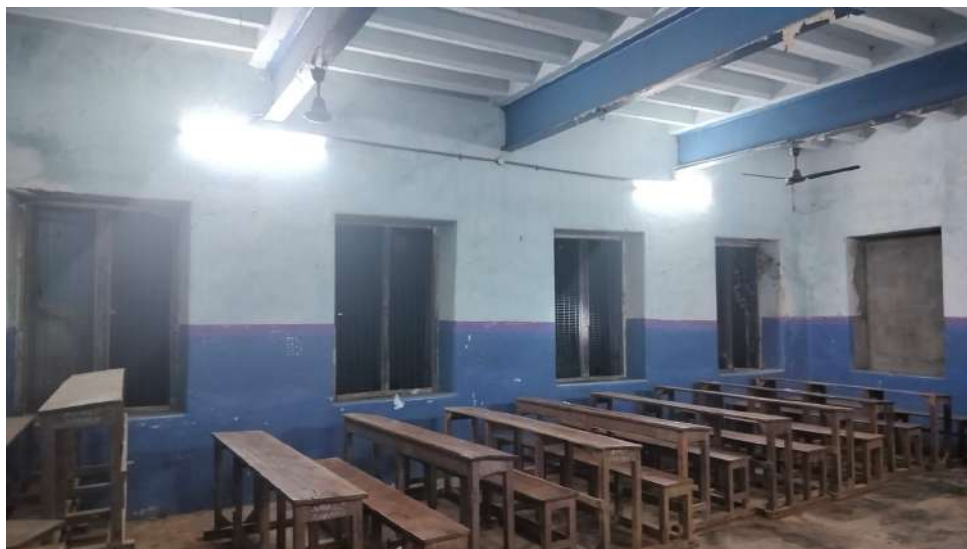
ANAKAPALLE- 531001. Ph.08924 220634

NAAC ACCREDITED B++ GRADE

Mail:amalcollegeakp1953@gmail.com, **web:**www.amalcollege.edu.in

Dr G.Jaya Babu, M.Sc,M.Phil., Ph.D.

PRINCIPAL (FAC) Ph.No.9490430638



IN CLASS ROOM



INFRONT OF ADMINISTRATION BLOCK



Jana M.L.
PRINCIPAL
A.M.A.L. COLLEGE
ANAKAPALLE



A.M.A.L. COLLEGE

ANAKAPALLE- 531001. Ph.08924 220634

NAAC ACCREDITED B++ GRADE

Mail:amalcollegeakp1953@gmail.com, **web:**www.amalcollege.edu.in

Dr G.Jaya Babu, M.Sc,M.Phil., Ph.D.

PRINCIPAL (FAC) Ph.No.9490430638



AT PLAY GROUND



Jaya Babu
PRINCIPAL
A.M.A.L. COLLEGE
ANAKAPALLE



A.M.A.L. COLLEGE

ANAKAPALLE- 531001. Ph.08924 220634

NAAC ACCREDITED B++ GRADE

Mail: amalcollegeakp1953@gmail.com, **web:** www.amalcollege.edu.in

Dr G.Jaya Babu, M.Sc,M.Phil., Ph.D.

PRINCIPAL (FAC) Ph.No.9490430638

SOLID WASTE MANAGEMENT



Jana M.L.
PRINCIPAL
A.M.A.L. COLLEGE
ANAKAPALLE



A.M.A.L. COLLEGE

ANAKAPALLE- 531001. Ph.08924 220634

NAAC ACCREDITED B++ GRADE

Mail:amalcollegeakp1953@gmail.com, **web:**www.amalcollege.edu.in

Dr G.Jaya Babu, M.Sc,M.Phil., Ph.D.

PRINCIPAL (FAC) Ph.No.9490430638

SOLID WASTE MANAGEMENT

Solid wastes comprise all the wastes arising from human and animal activities and are normally solid and that are discarded as useless or unwanted. To reduce waste at institute students and staff are educated on proper waste management practices through lecturers. Solid waste can be categorized into three types: biodegradable, non-biodegradable and hazardous waste. Bio-degradable wastes include food wastes, canteen waste, waste from toilets etc. Non-degradable wastes include plastic, tins and glass bottles etc. Hazardous waste is waste that is likely to be a threat to health or the environment like cleaning chemicals, acids and laboratory chemicals.

Solid waste management associated with the control of generation, storage, collection, transfer and transport processing and display of wastes in manner that is accord with the best principles of college health, economics and conservation.

A.M.A.L. College assigned advertisement on notice boards, display slogans in the campus. An administration office and every department of A.M.A.L. College create some waste and dumped in small waste dust bins located in the department. Each building several dust bins are placed in big dust bins by housekeeping staffs regularly. From the small bin wastes are dumped in big dust bin by housekeeping staffs regularly. The sweepers put them in a large dump yard at a little distance in the campus premises.



A.M.A.L.COLLEGE SWEEPERS



Jaya Babu
PRINCIPAL
A.M.A.L. COLLEGE
ANAKAPALLE



A.M.A.L. COLLEGE

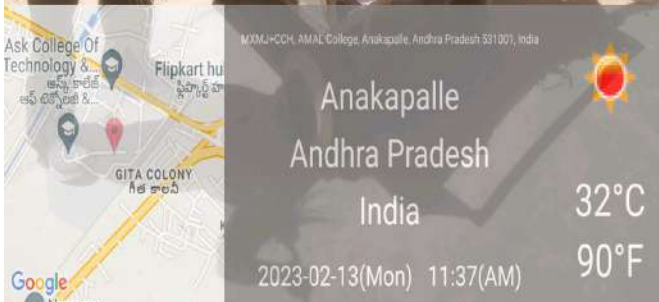
ANAKAPALLE- 531001. Ph.08924 220634

NAAC ACCREDITED B++ GRADE

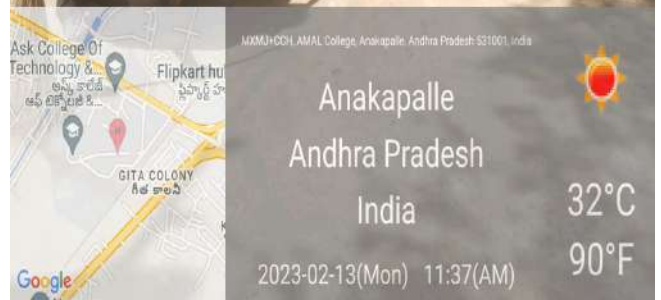
Mail: amalcollegeakp1953@gmail.com, web: www.amalcollege.edu.in

Dr. G. Jaya Babu, M.Sc., M.Phil., Ph.D.

PRINCIPAL (FAC) Ph.No.9490430638



TRANSPORT OF SOLID WASTE



CLEANING PROGRAMME



Gana M. S.
PRINCIPAL
A.M.A.L. COLLEGE
ANAKAPALLE



A.M.A.L. COLLEGE

ANAKAPALLE- 531001. Ph.08924 220634

NAAC ACCREDITED B++ GRADE

Mail:amalcollegeakp1953@gmail.com, **web:**www.amalcollege.edu.in

Dr G.Jaya Babu, M.Sc,M.Phil., Ph.D.

PRINCIPAL (FAC) Ph.No.9490430638



A MEDIUM DUST BIN AT ADMINISTRATION BLOCK



A MEDIUM DUST BIN AT BIOLOGY BLOCK



Jaya Babu
PRINCIPAL
A.M.A.L. COLLEGE
ANAKAPALLE



A.M.A.L. COLLEGE

ANAKAPALLE- 531001. Ph.08924 220634

NAAC ACCREDITED B++ GRADE

Mail: amalcollegeakp1953@gmail.com, web: www.amalcollege.edu.in

Dr G.Jaya Babu, M.Sc,M.Phil., Ph.D.

PRINCIPAL (FAC) Ph.No.9490430638



TRANSPORT OF SOLID WASTE



Gana M.L.
PRINCIPAL
A.M.A.L. COLLEGE
ANAKAPALLE



A.M.A.L. COLLEGE

ANAKAPALLE- 531001. Ph.08924 220634

NAAC ACCREDITED B++ GRADE

Mail: amalcollegeakp1953@gmail.com, **web:** www.amalcollege.edu.in

Dr G.Jaya Babu, M.Sc,M.Phil., Ph.D.

PRINCIPAL (FAC) Ph.No.9490430638



MAINTAINANCE OF DUSTBINS AT CANTEEN



Jaya Babu
PRINCIPAL
A.M.A.L. COLLEGE
ANAKAPALLE



A.M.A.L. COLLEGE

ANAKAPALLE- 531001. Ph.08924 220634

NAAC ACCREDITED B++ GRADE

Mail: amalcollegeakp1953@gmail.com, **web:** www.amalcollege.edu.in

Dr G.Jaya Babu, M.Sc,M.Phil., Ph.D.

PRINCIPAL (FAC) Ph.No.9490430638

VERMICOMPOST UNIT



Gana M.L.
PRINCIPAL
A.M.A.L. COLLEGE
ANAKAPALLE



A.M.A.L. COLLEGE

ANAKAPALLE- 531001. Ph.08924 220634

NAAC ACCREDITED B++ GRADE

Mail:amalcollegeakp1953@gmail.com, **web:**www.amalcollege.edu.in

VERMICOMPOST UNIT



Sana M. S.
PRINCIPAL
A.M.A.L. COLLEGE
ANAKAPALLE



A.M.A.L. COLLEGE

ANAKAPALLE- 531001. Ph.08924 220634

NAAC ACCREDITED B++ GRADE

Mail: amalcollegeakp1953@gmail.com, **web:** www.amalcollege.edu.in

Dr G.Jaya Babu, M.Sc,M.Phil., Ph.D.

PRINCIPAL (FAC) Ph.No.9490430638

LIQUID WASTE MANAGEMENT



Gana M.L.
PRINCIPAL
A.M.A.L. COLLEGE
ANAKAPALLE



A.M.A.L. COLLEGE

ANAKAPALLE- 531001. Ph.08924 220634

NAAC ACCREDITED B++ GRADE

Mail: amalcollegeakp1953@gmail.com, web: www.amalcollege.edu.in

Dr G.Jaya Babu, M.Sc,M.Phil., Ph.D.

PRINCIPAL (FAC) Ph.No.9490430638

LIQUID WASTE MANAGEMENT

Liquid waste is generated from Science laboratories, Hostels and Canteen.

Liquid wastes generated by the College are of two types:

1. Sewage waste.
2. Laboratory and canteen effluent.

The liquid wastes are mainly drained to improve the ground level of water.



LIQUID WASTE STORAGE PITS AT CHEMISTRY LABS



Jana A.L.
PRINCIPAL
A.M.A.L. COLLEGE
ANAKAPALLE



A.M.A.L. COLLEGE

ANAKAPALLE- 531001. Ph.08924 220634

NAAC ACCREDITED B++ GRADE

Mail: amalcollegeakp1953@gmail.com, **web:** www.amalcollege.edu.in

Dr G.Jaya Babu, M.Sc,M.Phil., Ph.D.

PRINCIPAL (FAC) Ph.No.9490430638

E-WASTE MANAGEMENT



Jaya Babu
PRINCIPAL
A.M.A.L. COLLEGE
ANAKAPALLE



A.M.A.L. COLLEGE

ANAKAPALLE- 531001. Ph.08924 220634

NAAC ACCREDITED B++ GRADE

Mail:amalcollegeakp1953@gmail.com, **web:**www.amalcollege.edu.in

Dr G.Jaya Babu, M.Sc,M.Phil., Ph.D.

PRINCIPAL (FAC) Ph.No.9490430638

E-WASTE MANAGEMENT

A.M.A.L. College has very efficient mechanism to dispose E-waste generated from various sources. E-waste are generated from computer laboratories, Electronics labs, Physics labs, and Chemistry Labs and Administration office. The E-waste includes out order equipment or obsolete items like lab instruments, circuits, desktops, and accessories, printer, network cables, cartridges, sound systems, Scientific instruments etc. all these wastes are put to optimal use. All such equipment's which cannot be reused or recycled is being disposed of through authorized vendors. Instead of a new procurement Buy-Back option is preferred for technology up gradation.



E-WASTE MANAGEMENT ROOM



Gana N. S.
PRINCIPAL
A.M.A.L. COLLEGE
ANAKAPALLE



A.M.A.L. COLLEGE

ANAKAPALLE- 531001. Ph.08924 220634

NAAC ACCREDITED B++ GRADE

Mail:amalcollegeakp1953@gmail.com, web:www.amalcollege.edu.in

Dr G.Jaya Babu, M.Sc,M.Phil., Ph.D.

PRINCIPAL (FAC) Ph.No.9490430638



**E-WASTE STORED IN A PARTICULAR ROOM IN STORE FOR EXCHANGE OFFER OR
DISPOSE OFF TO MINIMUM PRICE**



**E-WASTE STORED IN A PARTICULAR ROOM IN STORE FOR EXCHANGE OFFER OR
DISPOSE OFF TO MINIMUM PRICE**



Gana N. S.
PRINCIPAL
A.M.A.L. COLLEGE
ANAKAPALLE



A.M.A.L. COLLEGE

ANAKAPALLE- 531001. Ph.08924 220634

NAAC ACCREDITED B++ GRADE

Mail:amalcollegeakp1953@gmail.com, **web:**www.amalcollege.edu.in

Dr G.Jaya Babu, M.Sc,M.Phil., Ph.D.

PRINCIPAL (FAC) Ph.No.9490430638



**E-WASTE STORED IN A PARTICULAR ROOM IN STORE FOR EXCHANGE OFFER OR
DISPOSE OFF TO MINIMUM PRICE**



Jana M.L.
PRINCIPAL
A.M.A.L. COLLEGE
ANAKAPALLE



A.M.A.L. COLLEGE

ANAKAPALLE- 531001. Ph.08924 220634

NAAC ACCREDITED B++ GRADE

Mail: amalcollegeakp1953@gmail.com, **web:** www.amalcollege.edu.in

Dr G.Jaya Babu, M.Sc,M.Phil., Ph.D.

PRINCIPAL (FAC) Ph.No.9490430638

RAIN WATER HARVESTING



Jana M.L.
PRINCIPAL
A.M.A.L. COLLEGE
ANAKAPALLE



A.M.A.L. COLLEGE

ANAKAPALLE- 531001. Ph.08924 220634

NAAC ACCREDITED B++ GRADE

Mail: amalcollegeakp1953@gmail.com, **web:** www.amalcollege.edu.in

Dr G.Jaya Babu, M.Sc,M.Phil., Ph.D.

PRINCIPAL (FAC) Ph.No.9490430638

RAIN WATER HARVESTING

A.M.A.L. College is spread over an area of 24 acres. A recharge pit has been set up in every block of the college campus. During the rainy season water from the roof tops of the buildings directly fall into the recharge pits through rain water outlets, RCC drains and recharges the ground water table throughout the year.

RECHARGE PIT

A recharge pit allows the rain water to replenish ground water by recharging the underground aquifers. Recharge pit system is started by Anna Hazare in Ralegau Siddhi gramam, Maharashtra

Purpose of Recharge Pits:

These are natural or artificially constructed places that collect surface water most often in the term of rain or snowmelt. Replenishes the ground water level in the aquifer. These are constructed generally 1 to 2 m wide and 2 to 3 m deep. After excavation the pits are refilled with pebbles and boulders.



A RECHARGE PIT AT GARDEN OF GIRLS WAITING HALL



Dana M.L.S.
PRINCIPAL
A.M.A.L. COLLEGE
ANAKAPALLE



A.M.A.L. COLLEGE

ANAKAPALLE- 531001. Ph.08924 220634

NAAC ACCREDITED B++ GRADE

Mail: amalcollegeakp1953@gmail.com, web: www.amalcollege.edu.in

Dr G.Jaya Babu, M.Sc,M.Phil., Ph.D.

PRINCIPAL (FAC) Ph.No.9490430638



RAIN WATER DRAINAGE SYSTEM AT 400 MT. RUNNING TRACK



Gana H. S.
PRINCIPAL
A.M.A.L. COLLEGE
ANAKAPALLE



A.M.A.L. COLLEGE

ANAKAPALLE- 531001. Ph.08924 220634

NAAC ACCREDITED B++ GRADE

Mail: amalcollegeakp1953@gmail.com, web: www.amalcollege.edu.in

Dr G.Jaya Babu, M.Sc,M.Phil., Ph.D.

PRINCIPAL (FAC) Ph.No.9490430638



RAIN WATER STORAGE TANK – 1 AT VOCATIONAL COURSES BLOCK



RAIN WATER STORAGE TANK – 2 IN VOCATIONAL COURSES BLOCK



Gana M.L.
PRINCIPAL
A.M.A.L. COLLEGE
ANAKAPALLE



A.M.A.L. COLLEGE

ANAKAPALLE- 531001. Ph.08924 220634

NAAC ACCREDITED B++ GRADE

Mail: amalcollegeakp1953@gmail.com, **web:** www.amalcollege.edu.in

Dr G.Jaya Babu, M.Sc,M.Phil., Ph.D.

PRINCIPAL (FAC) Ph.No.9490430638

A recharge pit has been set up behind the Saraswathi idol where the rain water is stagnant.



NSS VOLUNTEERS SET UP A RECHARGE PIT



Jaya Babu
PRINCIPAL
A.M.A.L. COLLEGE
ANAKAPALLE



A.M.A.L. COLLEGE

ANAKAPALLE- 531001. Ph.08924 220634

NAAC ACCREDITED B++ GRADE

Mail: amalcollegeakp1953@gmail.com, **web:** www.amalcollege.edu.in

Dr G.Jaya Babu, M.Sc,M.Phil., Ph.D.

PRINCIPAL (FAC) Ph.No.9490430638



A PIT AT ARTS DEPARTMENT BLOCK



A PIT AT COMMERCE BLOCK



Jana N. S.
PRINCIPAL
A.M.A.L. COLLEGE
ANAKAPALLE



A.M.A.L. COLLEGE

ANAKAPALLE- 531001. Ph.08924 220634

NAAC ACCREDITED B++ GRADE

Mail:amalcollegeakp1953@gmail.com, **web:**www.amalcollege.edu.in

Dr G.Jaya Babu, M.Sc,M.Phil., Ph.D.

PRINCIPAL (FAC) Ph.No.9490430638



A PIT AT ENGLISH DEPARTMENT



A PIT AT BIOLOGY BLOCK



Gana M. S.
PRINCIPAL
A.M.A.L. COLLEGE
ANAKAPALLE



A.M.A.L. COLLEGE

ANAKAPALLE- 531001. Ph.08924 220634

NAAC ACCREDITED B++ GRADE

Mail: amalcollegeakp1953@gmail.com, web: www.amalcollege.edu.in

Dr. G.Jaya Babu, M.Sc., M.Phil., Ph.D.

PRINCIPAL (FAC) Ph.No.9490430638



A PIT AT LIBRARY BLOCK



A PIT AT CHEMISTRY BLOCK



Gana M. S.
PRINCIPAL
A.M.A.L. COLLEGE
ANAKAPALLE



A.M.A.L. COLLEGE

ANAKAPALLE- 531001. Ph.08924 220634

NAAC ACCREDITED B++ GRADE

Mail: amalcollegeakp1953@gmail.com, **web:** www.amalcollege.edu.in

Dr G.Jaya Babu, M.Sc,M.Phil., Ph.D.

PRINCIPAL (FAC) Ph.No.9490430638



A PIT AT ADMINISTRATION BLOCK



Gana H. S.
PRINCIPAL
A.M.A.L. COLLEGE
ANAKAPALLE



A.M.A.L. COLLEGE

ANAKAPALLE- 531001. Ph.08924 220634

NAAC ACCREDITED B++ GRADE

Mail: amalcollegeakp1953@gmail.com, **web:** www.amalcollege.edu.in

Dr G.Jaya Babu, M.Sc,M.Phil., Ph.D.

PRINCIPAL (FAC) Ph.No.9490430638

OPEN WELL



Gana M.L.S.
PRINCIPAL
A.M.A.L. COLLEGE
ANAKAPALLE



A.M.A.L. COLLEGE

ANAKAPALLE- 531001. Ph.08924 220634

NAAC ACCREDITED B++ GRADE

Mail:amalcollegeakp1953@gmail.com,**web:**www.amalcollege.edu.in

Dr G.Jaya Babu, M.Sc,M.Phil., Ph.D.

PRINCIPAL (FAC) Ph.No.9490430638



OPEN WELL



OPEN WELL



Gana M.L.
PRINCIPAL
A.M.A.L. COLLEGE
ANAKAPALLE



A.M.A.L. COLLEGE

ANAKAPALLE- 531001. Ph.08924 220634

NAAC ACCREDITED B++ GRADE

Mail:amalcollegeakp1953@gmail.com, web:www.amalcollege.edu.in

Dr G.Jaya Babu, M.Sc,M.Phil., Ph.D.

PRINCIPAL (FAC) Ph.No.9490430638



MINERAL WATER



Gana M. S.
PRINCIPAL
A.M.A.L. COLLEGE
ANAKAPALLE



A.M.A.L. COLLEGE

ANAKAPALLE- 531001. Ph.08924 220634

NAAC ACCREDITED B++ GRADE

Mail: amalcollegeakp1953@gmail.com, web: www.amalcollege.edu.in

Dr G.Jaya Babu, M.Sc,M.Phil., Ph.D.

PRINCIPAL (FAC) Ph.No.9490430638



MINERAL WATER PLANT



Gana N. S.
PRINCIPAL
A.M.A.L. COLLEGE
ANAKAPALLE



A.M.A.L. COLLEGE

ANAKAPALLE- 531001. Ph.08924 220634

NAAC ACCREDITED B++ GRADE

Mail:amalcollegeakp1953@gmail.com, **web:**www.amalcollege.edu.in

Dr G.Jaya Babu, M.Sc,M.Phil., Ph.D.

PRINCIPAL (FAC) Ph.No.9490430638



A.M.A.L. COLLEGE

ANAKAPALLE- 531001. Ph.08924 220634

NAAC ACCREDITED B++ GRADE

Mail:amalcollegeakp1953@gmail.com, **web:**www.amalcollege.edu.in

Dr G.Jaya Babu, M.Sc,M.Phil., Ph.D.

PRINCIPAL (FAC) Ph.No.9490430638

GREEN CAMPUS INITIATIVES



Gana M.L.S.
PRINCIPAL
A.M.A.L. COLLEGE
ANAKAPALLE



A.M.A.L. COLLEGE

ANAKAPALLE- 531001. Ph.08924 220634

NAAC ACCREDITED B++ GRADE

Mail:amalcollegeakp1953@gmail.com, **web:**www.amalcollege.edu.in

Dr G.Jaya Babu, M.Sc,M.Phil., Ph.D.

PRINCIPAL (FAC) Ph.No.9490430638

GREEN CAMPUS INITIATIVES INCLUDE

Restricted entry of automobiles: A.M.A.L. College does not allow to enter in the campus premises all the vehicles. Only the fraternity of college can enter with their vehicles. In the college campus restricted automobile can enter and most of them park in the parking area.



CAR ENTRY IN THE CAMPUS AFTER PERMISSION FROM SECURITY



THE MOVEMENT REGISTER AT THE MAIN GATE IS MANAGED BY SECURITY



Jana M.L.
PRINCIPAL
A.M.A.L. COLLEGE
ANAKAPALLE



A.M.A.L. COLLEGE

ANAKAPALLE- 531001. Ph.08924 220634

NAAC ACCREDITED B++ GRADE

Mail: amalcollegeakp1953@gmail.com, **web:** www.amalcollege.edu.in

Dr G.Jaya Babu, M.Sc,M.Phil., Ph.D.

PRINCIPAL (FAC) Ph.No.9490430638



NO ENTRY AUTOMOBILES DISPLAY BOARD AT MAIN GATE 2



Jana M. S.
PRINCIPAL
A.M.A.L. COLLEGE
ANAKAPALLE



A.M.A.L. COLLEGE

ANAKAPALLE- 531001. Ph.08924 220634

NAAC ACCREDITED B++ GRADE

Mail: amalcollegeakp1953@gmail.com, web: www.amalcollege.edu.in

Dr G.Jaya Babu, M.Sc,M.Phil., Ph.D.

PRINCIPAL (FAC) Ph.No.9490430638



CAR PARKING ZONE IN THE CAMPUS



TWO WHEELER PARKING ZONE IN THE CAMPUS



Jaya Babu
PRINCIPAL
A.M.A.L. COLLEGE
ANAKAPALLE



A.M.A.L. COLLEGE

ANAKAPALLE- 531001. Ph.08924 220634

NAAC ACCREDITED B++ GRADE

Mail: amalcollegeakp1953@gmail.com, web: www.amalcollege.edu.in

Dr G.Jaya Babu, M.Sc,M.Phil., Ph.D.

PRINCIPAL (FAC) Ph.No.9490430638



BICYCLE ZONE



E - BIKE ZONE



Jana M.L.
PRINCIPAL
A.M.A.L. COLLEGE
ANAKAPALLE



A.M.A.L. COLLEGE

ANAKAPALLE- 531001. Ph.08924 220634

NAAC ACCREDITED B++ GRADE

Mail: amalcollegeakp1953@gmail.com, **web:** www.amalcollege.edu.in

Dr G.Jaya Babu, M.Sc,M.Phil., Ph.D.

PRINCIPAL (FAC) Ph.No.9490430638

BUILT ENVIRONMENT WITH RAMPS



Jana M.L.
PRINCIPAL
A.M.A.L. COLLEGE
ANAKAPALLE



A.M.A.L. COLLEGE

ANAKAPALLE- 531001. Ph.08924 220634

NAAC ACCREDITED B++ GRADE

Mail:amalcollegeakp1953@gmail.com, **web:**www.amalcollege.edu.in

Dr G.Jaya Babu, M.Sc,M.Phil., Ph.D.

PRINCIPAL (FAC) Ph.No.9490430638

BUILT ENVIRONMENT WITH RAMPS FOR EASY ACCESS TO CLASSROOMS AND ADMINISTRATION OFFICE

According to the persons with disabilities act 2016, discrimination against disabilities are strictly prohibited. A.M.A.L. College intend to provide comprehensive and inclusive teaching and learning environment to students and any employees.



A RAMP AT ADMINISTRATION BLOCK



A RAMP AT COMMERCE DEPARTMENT BLOCK



Gana M.L.
PRINCIPAL
A.M.A.L. COLLEGE
ANAKAPALLE



A.M.A.L. COLLEGE

ANAKAPALLE- 531001. Ph.08924 220634

NAAC ACCREDITED B++ GRADE

Mail:amalcollegeakp1953@gmail.com, **web:**www.amalcollege.edu.in

Dr G.Jaya Babu, M.Sc,M.Phil., Ph.D.

PRINCIPAL (FAC) Ph.No.9490430638



A RAMP AT COMPUTER CLASS ROOM BLOCK A RAMP AT BIOLOGY DEPARTMENT BLOCK



A RAMP AT CHEMISTRY BLOCK



Jana M.L.
PRINCIPAL
A.M.A.L. COLLEGE
ANAKAPALLE



A.M.A.L. COLLEGE

ANAKAPALLE- 531001. Ph.08924 220634

NAAC ACCREDITED B++ GRADE

Mail: amalcollegeakp1953@gmail.com, web: www.amalcollege.edu.in

Dr G.Jaya Babu, M.Sc,M.Phil., Ph.D.

PRINCIPAL (FAC) Ph.No.9490430638

SELF PROPELLING WHEEL CHAIR



Gana M.L.
PRINCIPAL
A.M.A.L. COLLEGE
ANAKAPALLE



A.M.A.L. COLLEGE

ANAKAPALLE- 531001. Ph.08924 220634

NAAC ACCREDITED B++ GRADE

Mail:amalcollegeakp1953@gmail.com, **web:**www.amalcollege.edu.in

Dr G.Jaya Babu, M.Sc,M.Phil., Ph.D.

PRINCIPAL (FAC) Ph.No.9490430638

SELF-PROPELLING CHAIRS

Stephan Farffler designed the world's first self-propelling chair, now it develops power wheel chairs. It is a social responsibility and perception that disabled students should be respected and treated as a normal human being. the wheel chair facility is provided for disabled students. College students with physical disabilities who use wheel chairs. It overcomes the obstacles when Trans portioning to an institution. It is provision for time management factor.



Gana M.L.
PRINCIPAL
A.M.A.L. COLLEGE
ANAKAPALLE



A.M.A.L. COLLEGE

ANAKAPALLE- 531001. Ph.08924 220634

NAAC ACCREDITED B++ GRADE

Mail:amalcollegeakp1953@gmail.com, **web:**www.amalcollege.edu.in

Dr G.Jaya Babu, M.Sc,M.Phil., Ph.D.

PRINCIPAL (FAC) Ph.No.9490430638



G. Jaya Babu
PRINCIPAL
A.M.A.L. COLLEGE
ANAKAPALLE



A.M.A.L. COLLEGE

ANAKAPALLE- 531001. Ph.08924 220634

NAAC ACCREDITED B++ GRADE

Mail: amalcollegeakp1953@gmail.com, **web:** www.amalcollege.edu.in

Dr G.Jaya Babu, M.Sc,M.Phil., Ph.D.

PRINCIPAL (FAC) Ph.No.9490430638

DISABLED-FRIENDLY WASHROOM



Gana M.L.
PRINCIPAL
A.M.A.L. COLLEGE
ANAKAPALLE



A.M.A.L. COLLEGE

ANAKAPALLE- 531001. Ph.08924 220634

NAAC ACCREDITED B++ GRADE

Mail: amalcollegeakp1953@gmail.com, **web:** www.amalcollege.edu.in

Dr G.Jaya Babu, M.Sc,M.Phil., Ph.D.

PRINCIPAL (FAC) Ph.No.9490430638

DISABLED-FRIENDLY WASHROOM

To provide comfortable teaching learning environment for the disabled persons. A.M.A.L.College has dedicated washroom in the college premises.



Gana M.L.
PRINCIPAL
A.M.A.L. COLLEGE
ANAKAPALLE



A.M.A.L. COLLEGE

ANAKAPALLE- 531001. Ph.08924 220634

NAAC ACCREDITED B++ GRADE

Mail: amalcollegeakp1953@gmail.com, **web:** www.amalcollege.edu.in

Dr G.Jaya Babu, M.Sc,M.Phil., Ph.D.

PRINCIPAL (FAC) Ph.No.9490430638

LANDSCAPING WITH PLANTS



Gana M.L.
PRINCIPAL
A.M.A.L. COLLEGE
ANAKAPALLE



A.M.A.L. COLLEGE

ANAKAPALLE- 531001. Ph.08924 220634

NAAC ACCREDITED B++ GRADE

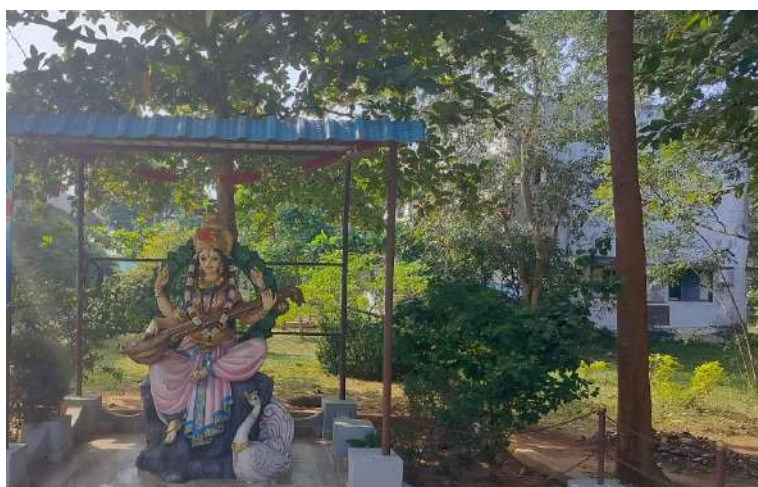
Mail:amalcollegeakp1953@gmail.com, **web:**www.amalcollege.edu.in

Dr G.Jaya Babu, M.Sc,M.Phil., Ph.D.

PRINCIPAL (FAC) Ph.No.9490430638

LANDSCAPING WITH PLANTS

Every year during rainy season, college takes the initiative of plantation inside the college campus. The college has devolved a nearly 2000 plants in around 32 acres of land, besides this other 100 fruit bearing plants including oranges banana, mango, litchi, Beal, sapota, castard apple, graviola wood apple and guava. In the campus around 50 almond trees, 45 teak trees and 55 coconut trees have been planted. In a location inside the campus some medicinal plants are also planted over last five years.



AT SARSWATHI IDOL



INFRONT OF ADMINISTRATION BLOCK



Gana H. S.
PRINCIPAL
A.M.A.L. COLLEGE
ANAKAPALLE



A.M.A.L. COLLEGE

ANAKAPALLE- 531001. Ph.08924 220634

NAAC ACCREDITED B++ GRADE

Mail:amalcollegeakp1953@gmail.com, **web:**www.amalcollege.edu.in

Dr G.Jaya Babu, M.Sc,M.Phil., Ph.D.

PRINCIPAL (FAC) Ph.No.9490430638



BOTANICAL GARDEN



FROM MAIN GATE-1



Gana M.L.
PRINCIPAL
A.M.A.L. COLLEGE
ANAKAPALLE



A.M.A.L. COLLEGE

ANAKAPALLE- 531001. Ph.08924 220634

NAAC ACCREDITED B++ GRADE

Mail:amalcollegeakp1953@gmail.com, **web:**www.amalcollege.edu.in

Dr G.Jaya Babu, M.Sc,M.Phil., Ph.D.

PRINCIPAL (FAC) Ph.No.9490430638



AT BOIOLOGY BLOCK



Jana M.L.
PRINCIPAL
A.M.A.L. COLLEGE
ANAKAPALLE



A.M.A.L. COLLEGE

ANAKAPALLE- 531001. Ph.08924 220634

NAAC ACCREDITED B++ GRADE

Mail:amalcollegeakp1953@gmail.com, **web:**www.amalcollege.edu.in

Dr G.Jaya Babu, M.Sc,M.Phil., Ph.D.

PRINCIPAL (FAC) Ph.No.9490430638



INFRONT OF ADMINISTRATION BLOCK



INFRONT OF GIRLS WAITING HALL



Jana M.L.
PRINCIPAL
A.M.A.L. COLLEGE
ANAKAPALLE



A.M.A.L. COLLEGE

ANAKAPALLE- 531001. Ph.08924 220634

NAAC ACCREDITED B++ GRADE

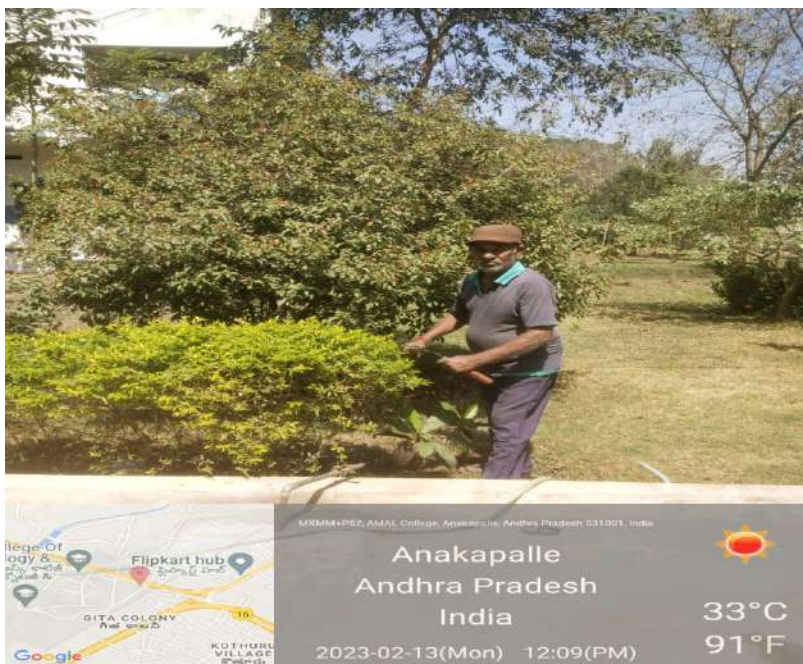
Mail:amalcollegeakp1953@gmail.com, **web:**www.amalcollege.edu.in

Dr G.Jaya Babu, M.Sc,M.Phil., Ph.D.

PRINCIPAL (FAC) Ph.No.9490430638



INFRONT OF ADMINISTRATION BLOCK



PRUNING IN THE CAMPUS



Jaya Babu
PRINCIPAL
A.M.A.L. COLLEGE
ANAKAPALLE



A.M.A.L. COLLEGE

ANAKAPALLE- 531001. Ph.08924 220634

NAAC ACCREDITED B++ GRADE

Mail:amalcollegeakp1953@gmail.com, **web:**www.amalcollege.edu.in

Dr G.Jaya Babu, M.Sc,M.Phil., Ph.D.

PRINCIPAL (FAC) Ph.No.9490430638



INFRONT OF BIOLOGY BLOCK



INFRONT OF ADMINISTRATION BLOCK



Jana M.L.
PRINCIPAL
A.M.A.L. COLLEGE
ANAKAPALLE



A.M.A.L. COLLEGE

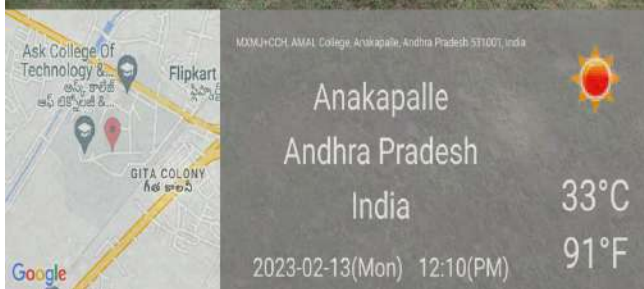
ANAKAPALLE- 531001. Ph.08924 220634

NAAC ACCREDITED B++ GRADE

Mail:amalcollegeakp1953@gmail.com, **web:**www.amalcollege.edu.in

Dr G.Jaya Babu, M.Sc,M.Phil., Ph.D.

PRINCIPAL (FAC) Ph.No.9490430638



GRASSING CUTTING WITH TRIMMING MACHINE



Jana M.L.
PRINCIPAL
A.M.A.L. COLLEGE
ANAKAPALLE



A.M.A.L. COLLEGE

ANAKAPALLE- 531001. Ph.08924 220634

NAAC ACCREDITED B++ GRADE

Mail: amalcollegeakp1953@gmail.com, **web:** www.amalcollege.edu.in

Dr G.Jaya Babu, M.Sc,M.Phil., Ph.D.

PRINCIPAL (FAC) Ph.No.9490430638

BAN ON USE OF PLASTIC



Jana M.L.
PRINCIPAL
A.M.A.L. COLLEGE
ANAKAPALLE



A.M.A.L. COLLEGE

ANAKAPALLE- 531001. Ph.08924 220634

NAAC ACCREDITED B++ GRADE

Mail: amalcollegeakp1953@gmail.com, **web:** www.amalcollege.edu.in

Dr G.Jaya Babu, M.Sc,M.Phil., Ph.D.

PRINCIPAL (FAC) Ph.No.9490430638

BAN ON USE OF PLASTIC

On the occasion of World Environment Day a programme was organized regarding abandoning the use of plastic. A pledge was taken by the members of the College community regarding abandoning use of Plastic in the College Campus. The theme of the programme was “Kill plastic pollution”. Volunteers of NSS, college unit also took part in the programme. College took initiatives to make the campus plastic free zone.



DISPLAY BOARDS IN THE CAMPUS



Jana M.L.
PRINCIPAL
A.M.A.L. COLLEGE
ANAKAPALLE



A.M.A.L. COLLEGE

ANAKAPALLE- 531001. Ph.08924 220634

NAAC ACCREDITED B++ GRADE

Mail:amalcollegeakp1953@gmail.com, **web:**www.amalcollege.edu.in

Dr G.Jaya Babu, M.Sc,M.Phil., Ph.D.

PRINCIPAL (FAC) Ph.No.9490430638



REMOVE THE PLASTIC



REMOVE THE PLASTIC



Jaya M.L.
PRINCIPAL
A.M.A.L. COLLEGE
ANAKAPALLE



A.M.A.L. COLLEGE

ANAKAPALLE- 531001. Ph.08924 220634

NAAC ACCREDITED B++ GRADE

Mail:amalcollegeakp1953@gmail.com, **web:**www.amalcollege.edu.in

Dr G.Jaya Babu, M.Sc,M.Phil., Ph.D.

PRINCIPAL (FAC) Ph.No.9490430638



Gana M.L.
PRINCIPAL
A.M.A.L. COLLEGE
ANAKAPALLE



A.M.A.L. COLLEGE

ANAKAPALLE- 531001. Ph.08924 220634

NAAC ACCREDITED B++ GRADE

Mail:amalcollegeakp1953@gmail.com, **web:**www.amalcollege.edu.in

Dr G.Jaya Babu, M.Sc,M.Phil., Ph.D.

PRINCIPAL (FAC) Ph.No.9490430638



PAPER CLIPS



REMOVAL OF PLASTIC BY STAFF



Gana M.L.
PRINCIPAL
A.M.A.L. COLLEGE
ANAKAPALLE



A.M.A.L. COLLEGE

ANAKAPALLE- 531001. Ph.08924 220634

NAAC ACCREDITED B++ GRADE

Mail:amalcollegeakp1953@gmail.com, **web:**www.amalcollege.edu.in

Dr. G.Jaya Babu, M.Sc., M.Phil., Ph.D.

PRINCIPAL (FAC) Ph.No.9490430638

కళాశాలలో విద్యార్థులు శ్రమదానం



కళాశాల ఆవరణను శుభ్రపర్చిన విద్యార్థులు

కొత్తూరు, సెప్టెంబరు 24 : రీసైక్లింగ్కు అవకాశం లేని ప్లాస్టిక్ సంచులు వాడకం ప్రమాదకరమని ఏఎంఏఎల్ కళాశాల ప్రిన్సిపాల్ డాక్టర్ జి.జయబాబు అన్నారు. శని వారం ఎన్ఎస్ఎస్ డే సందర్భంగా కళాశాల ప్రాంగణంలో మొక్కలు నాటి, విద్యార్థులతో కలిసి కళాశాల ప్రాంగణాన్ని శుభ్రం చేశారు. ఉమెన్ ఎంపవర్మెంటు కన్వీనర్ జె.సామ్రాజ్యం, సి.మోహిని, డాక్టర్ సౌజన్య సూపరింటెం డెంట్ పి. అనూరాధ తదితరులు పాల్గొన్నారు.

ఆదివారం 25 సెప్టెంబర్ 2022

విజన్ ఆఫ్ ద పేపుల్

రీసైక్లింగ్కు అవకాశం లేని పలుచని ప్లాస్టిక్ సంచులు వాడకం పెనుప్రమాదం

అనకాపల్లిలో న్యూస్ టుడే ఏ ఏ ఏ ఏ ఏ కళాశాలలో ఆదివారం ఎన్.ఎస్.ఎస్. డే సందర్భంగా కళాశాల ఆవరణలో ఉన్న ప్లాస్టిక్ పదార్థాలన్నీ పరి వేయటం జరిగింది. ఈ సందర్భంగా ప్రిన్సిపాల్ డా. జి. జయ బాబు మాట్లాడుతూ ఎన్ఎస్ఎస్, వాలంటీర్లు ఆందోసి అభివృద్ధిచేశారు. కళాశాల పుణ్యం లో ముందుంటే ప్రిన్సిపల్ ఆందోసి స్థలగుచ్ఛిము లతో సత్కరించారు. అంతే కాక ఎన్ ఎస్ ఎస్ డే సందర్భంగా ఈ కార్యక్రమం చేపట్టిన ఎన్ ఎస్ ఎస్, అధికారి డా.ఎం.హరిబాబు ను అభినందించారు. పోలీసు మాట్లాడుతూ ఎన్ఎస్ఎస్ డే ప్రత్యేకత గురించి వివరించి, ప్లాస్టిక్ వస్తువుల కచ్చా ప్లాస్టిక్ సంచుల వాడకమే ప్రమాదం అని పలుచగా ఉండే ఈ ప్లాస్టిక్ సంచులను అతిగా వాడే, ఎక్కువ వేడితో అక్కడ వేడేయడం, చీలిని రీసైక్లింగ్ చేసే అవకాశం లేని పదార్థం వల్ల భవిష్యత్తులో పెను ప్రమాదమే ఎదురవుతుందని అన్నారు. తరువాత కళాశాల ఆవరణలో మొక్కలను నాటారు ఈ



కార్యక్రమంలో వాలంటీర్లు, ఉమెన్ ఎంపవర్మెంట్ కన్వీనర్ జె. సామ్రాజ్యం, సి. మోహిని, డా. సౌజన్య, సూపరింటెండ్ట్ పి. అనూరాధ పాల్గొన్నారు.

మాట్లాడుతూ ఈ దేయూత పథకాన్ని ఉప ముఖ్యమంత్రి ముఖ్యమంత్రి

PAPER CLIPS

కళాశాలలో విద్యార్థులు శ్రమదానం



కళాశాల ఆవరణను శుభ్రపర్చిన విద్యార్థులు

కొత్తూరు, సెప్టెంబరు 24 : రీసైక్లింగ్కు అవకాశం లేని ప్లాస్టిక్ సంచులు వాడకం ప్రమాదకరమని ఏఎంఏఎల్ కళాశాల ప్రిన్సిపాల్ డాక్టర్ జి.జయబాబు అన్నారు. శని వారం ఎన్ఎస్ఎస్ డే సందర్భంగా కళాశాల ప్రాంగణంలో మొక్కలు నాటి, విద్యార్థులతో కలిసి కళాశాల ప్రాంగణాన్ని శుభ్రం చేశారు. ఉమెన్ ఎంపవర్మెంటు కన్వీనర్ జె.సామ్రాజ్యం, సి.మోహిని, డాక్టర్ సౌజన్య సూపరింటెం డెంట్ పి. అనూరాధ తదితరులు పాల్గొన్నారు.

ప్లాస్టిక్ వస్తువులు వినియోగించొద్దు

కొత్తూరు (అనకాపల్లి), న్యూస్ టుడే: ప్రజలకు అన్ని అంశాల్లో అవగాహన కల్పించి, వారిలో ఖైతన్యం తీసుకురావడానికి విద్యార్థులు కృషి చేయాలని ఏఎంఏఎల్ కళాశాల ప్రిన్సిపాల్ డాక్టర్ గెల్లా జయబాబు కోరారు. జాతీయ సేవా పథకం దినోత్సవం సందర్భంగా అనకాపల్లి ఏఎం ఏఎల్ కళాశాల ఎన్ఎస్ఎస్ ఆధ్వర్యంలో శని వారం ప్లాస్టిక్పై అవగాహన కల్పించారు. ఎన్ సీసీ అధికారి డాక్టర్ డాక్టర్ హరిబాబు ఆధ్వర్యంలో పారిశుధ్యం మెరుగు కృషి చేస్తున్న ఉత్తమ ఉద్యోగులను సత్కరించారు. సామ్రాజ్యం, మోహిని, సౌజన్య, అనూరాధ తదితరులు పాల్గొన్నారు.



Gana M...
PRINCIPAL
A.M.A.L. COLLEGE
ANAKAPALLE



A.M.A.L. COLLEGE

ANAKAPALLE- 531001. Ph.08924 220634

NAAC ACCREDITED B++ GRADE

Mail:amalcollegeakp1953@gmail.com, web:www.amalcollege.edu.in

Dr G.Jaya Babu, M.Sc,M.Phil., Ph.D.

PRINCIPAL (FAC) Ph.No.9490430638

ప్లాస్టిక్ వినియోగంతో పర్యావరణానికి నష్టం

తుమ్మపాల: రీసైక్లింగ్కు అవకాశం లేని ప్లాస్టిక్ వినియోగం వల్ల పర్యావరణానికి నష్టమని ఏఎంఎఫ్ఎల్ కళాశాల ప్రిన్సిపాల్ డా.జి.జయబాబు అన్నారు. అనకాపల్లి మండలం కొత్తూరు ఏఎంఎఫ్ఎల్ కళాశాలలో ఎన్ఎస్ఎస్ దినోత్సవం సందర్భంగా కళాశాల ఆవరణలో వ్యర్థాలను శుభ్రం చేసి మొక్కలు నాటారు. ఈ సందర్భంగా ఆయన మాట్లాడుతూ ప్లాస్టిక్ పస్తువుల కన్నా ప్లాస్టిక్ సంచుల వాడకమే ప్రమాదమని, పలుచగా ఉండటం చేత ఎక్కడపడితే అక్కడ పడేయటం వల్ల రీసైక్లింగ్కు అవకాశం లేకుండా అపుతుందన్నారు. ఎన్ఎస్ఎస్ అధికారి డా.ఎం.హరిబాబు మాట్లాడుతూ ప్లాస్టిక్ వాడకాన్ని నియంత్రించి భవిష్యత్ తరాలకు కాలుష్యం లేని సమాజాన్ని అందించాలని కోరారు. అంతకుముందు కళాశాలలో పనిచేస్తున్న స్వీపర్లకు పుష్పగుచ్చాలతో సత్కరించి పండ్లు అందజేశారు. ఈ కార్యక్రమంలో మహిళా ఎంపవర్ మెంట్ కన్వీనర్ జి.సామ్రాజ్యం, సి.మోహిని, సౌజన్య, సూపరింటెండెంట్ పి.అనురాధ ఎన్ఎస్ఎస్ వలంటీర్లు పాల్గొన్నారు.



ఏఎంఎఫ్ఎల్ కళాశాలలో ప్లాస్టిక్ వ్యర్థాలను

శుభ్రం చేస్తున్న ఎన్ఎస్ఎస్ వలంటీర్లు

స్తున్న స్వీపర్లకు పుష్పగుచ్చాలతో సత్కరించి పండ్లు అందజేశారు. ఈ కార్యక్రమంలో మహిళా ఎంపవర్ మెంట్ కన్వీనర్ జి.సామ్రాజ్యం, సి.మోహిని, సౌజన్య, సూపరింటెండెంట్ పి.అనురాధ ఎన్ఎస్ఎస్ వలంటీర్లు పాల్గొన్నారు.

PAPER CLIP



G. Jaya Babu
PRINCIPAL
A.M.A.L. COLLEGE
ANAKAPALLE



A.M.A.L. COLLEGE

ANAKAPALLE- 531001. Ph.08924 220634

NAAC ACCREDITED B++ GRADE

Mail:amalcollegeakp1953@gmail.com, **web:**www.amalcollege.edu.in

Dr G.Jaya Babu, M.Sc,M.Phil., Ph.D.

PRINCIPAL (FAC) Ph.No.9490430638

CIRCULARS FOR CLEAN AND GREEN PROGRAMS



Jana M.L.
PRINCIPAL
A.M.A.L. COLLEGE
ANAKAPALLE



A.M.A.L. COLLEGE

ANAKAPALLE- 531001. Ph.08924 220634

NAAC ACCREDITED B++ GRADE

Mail: amalcollegeakp1953@gmail.com, web: www.amalcollege.edu.in

Dr G.Jaya Babu, M.Sc,M.Phil., Ph.D.

PRINCIPAL (FAC) Ph.No.9490430638

BAN ON USE OF PLASTIC

On the occasion of World Environment Day a programme was organized regarding abandoning the use of plastic. A pledge was taken by the members of the College community regarding abandoning use of Plastic in the College Campus. The theme of the programme was “Kill plastic pollution”. Volunteers of NSS, College unit also took part in the programme. College took initiatives to make the campus plastic free zone.



DISPLAY BOARDS IN THE CAMPUS



Gana M.L.S.
PRINCIPAL
A.M.A.L. COLLEGE
ANAKAPALLE



A.M.A.L. COLLEGE

ANAKAPALLE- 531001. Ph.08924 220634

NAAC ACCREDITED B++ GRADE

Mail: amalcollegeakp1953@gmail.com, **web:** www.amalcollege.edu.in

Dr. G.Jaya Babu, M.Sc., M.Phil., Ph.D.

PRINCIPAL (FAC) Ph.No.9490430638

Anakapalle Merchants' Association Lingamurthy College

RC. No.



Phones : 23269 & 22634

ANAKAPALLE - 531 001

Date 21/09/2019

Circular

All students are hereby informed to participate in campus cleaning, scheduled on 24/09/2019 in large number to make the program success under the clean and green initiation on the occasion of NSS Day.


PRINCIPAL
A.M.A.L. COLLEGE
ANAKAPALLE



A.M.A.L. COLLEGE

ANAKAPALLE- 531001. Ph.08924 220634

NAAC ACCREDITED B++ GRADE

Mail: amalcollegeakp1953@gmail.com, web: www.amalcollege.edu.in

Dr G.Jaya Babu, M.Sc,M.Phil., Ph.D.

PRINCIPAL (FAC) Ph.No.9490430638

CLEAN AND GREEN INITIATION PROGRAM- 24.09.2019



Jaya Babu
PRINCIPAL
A.M.A.L. COLLEGE
ANAKAPALLE



A.M.A.L. COLLEGE

ANAKAPALLE- 531001. Ph.08924 220634

NAAC ACCREDITED B++ GRADE

Mail: amalcollegeakp1953@gmail.com, **web:** www.amalcollege.edu.in

Dr G.Jaya Babu, M.Sc,M.Phil., Ph.D.

PRINCIPAL (FAC) Ph.No.9490430638



Gana M.L.
PRINCIPAL
A.M.A.L. COLLEGE
ANAKAPALLE



A.M.A.L. COLLEGE

ANAKAPALLE- 531001. Ph.08924 220634

NAAC ACCREDITED B++ GRADE

Mail: amalcollegeakp1953@gmail.com, web: www.amalcollege.edu.in

Dr. G.Jaya Babu, M.Sc., M.Phil., Ph.D.

PRINCIPAL (FAC) Ph.No.9490430638

Anakapalle Merchants' Association Lingamurthy College

RC. No.



Phones : 23269 & 22634

ANAKAPALLE - 531 001

Date 30/09/2019

Circular

All the staff and students are hereby informed to participate to make the campus plastic free zone, scheduled on 02/10/2019 in large number to make the program success under the clean and green initiation on the occasion of Gandhaji Birth anniversary.

G. Jaya Babu
PRINCIPAL
A.M.A.L. COLLEGE
ANAKAPALLE



A.M.A.L. COLLEGE

ANAKAPALLE- 531001. Ph.08924 220634

NAAC ACCREDITED B++ GRADE

Mail: amalcollegeakp1953@gmail.com, web: www.amalcollege.edu.in

Dr. G. Jaya Babu, M.Sc., M.Phil., Ph.D.

PRINCIPAL (FAC) Ph.No.9490430638

CLEAN AND GREEN INITIATION PROGRAM- 02.10.2019



ఘనంగా ఎన్ఎస్ఎస్ ఆవిర్భావ దినోత్సవం

మమ్మహి/అనాపల్లిలో: పలు కళాశాలల్లో జాతీయ సేవా పథకం (ఎన్ఎస్ఎస్) ఆవిర్భావ దినోత్సవ వేడుకలు మంగళవారం ఘనంగా నిర్వహించారు. కొత్తూరు ఏఎంఎల్ కళాశాలలో ఎన్ఎస్ఎస్ విభాగం ఆధ్వర్యంలో వ్యర్థాల తొలగింపు కార్యక్రమం చేపట్టారు. ఈ సందర్భంగా కళాశాల పాలకుమండలి అధ్యక్షుడు కేఎస్ఎస్ మంగరాజు మాట్లాడుతూ వచ్చడం, పరిశుభ్రత వంటి అంశాల్లో ప్రజలకు అవగాహన కల్పించడంలో ఎన్ఎస్ఎస్ కీలక పాత్ర పోషిస్తుందన్నారు. విద్యార్థులు కళాశాల ప్రాంగణంలో రెక్కెదెదాన్ని తొలగించి పరిశుభ్రం చేశారు. కరస్పాండెంట్: డా. శ్రీనివాసరావు.

వ్యర్థాల తొలగింపును విద్యార్థులు

ప్రిన్సిపాల్ డాక్టర్ గెల్లా జయబాబు తదితరులు పాల్గొన్నారు. హిమశిఖర్ కళాశాలలో కరస్పాండెంట్ కె.జయరామ్ ఆధ్వర్యంలో ఎన్ఎస్ఎస్ దినోత్సవాన్ని ఘనంగా నిర్వహించారు. విద్యార్థులతో సర్వావరణ పరిరక్షణ ప్రతిజ్ఞ చేయించారు మొట్టమొదటిసారి.

సాక్షి చందాదారులుగా చేరడమిది కుమార్తె!

పి.కు. పేపరు లిండరులో

విశాఖపట్నం : గురువారం : అక్టోబర్ 31, 2019 **సాక్షి**

ఏఎంఎల్ కళాశాలలో ప్లాస్టిక్ వ్యర్థాలను తొలగిస్తున్న సెల్లం

(అనాపల్లి మండలం కొత్తూరు ఏఎంఎల్ కళాశాలలో పాలకవర్గం అధ్యక్షుడు కేఎస్ఎస్.మంగరాజు, ప్రిన్సిపాల్ డాక్టర్ జి.జయబాబు గాంధీ విగ్రహానికి పూలమాల వేసి వివాళులైనారు. ప్లాస్టిక్ వాడకం ఆనర్థం ఆనే ఆంశంపై ప్రతిజ్ఞ చేసి కళాశాలలో ప్లాస్టిక్ వ్యర్థాలను తొలగించారు.)



G. Jaya Babu
PRINCIPAL
A.M.A.L. COLLEGE
ANAKAPALLE



A.M.A.L. COLLEGE

ANAKAPALLE- 531001. Ph.08924 220634

NAAC ACCREDITED B++ GRADE

Mail: amalcollegeakp1953@gmail.com, web: www.amalcollege.edu.in

Dr G.Jaya Babu, M.Sc,M.Phil., Ph.D.

PRINCIPAL (FAC) Ph.No.9490430638

Anakapalle Merchants' Association Lingamurthy College

RC. No.



Phones : 23269 & 22634

ANAKAPALLE - 531 001

Date 22/09/2022

Circular

All the students are hereby informed to participate to make the campus plastic free zone scheduled on 24/09/2022 in large number to make the program success under the clean and green initiative.

PRINCIPAL
A.M.A.L.COLLEGE
ANAKAPALLE



A.M.A.L. COLLEGE

ANAKAPALLE- 531001. Ph.08924 220634

NAAC ACCREDITED B++ GRADE

Mail: amalcollegeakp1953@gmail.com, **web:** www.amalcollege.edu.in

Dr G.Jaya Babu, M.Sc,M.Phil., Ph.D.

PRINCIPAL (FAC) Ph.No.9490430638

CLEAN AND GREEN INITIATION PROGRAM– 24.09.2022



Gana M.L.
PRINCIPAL
A.M.A.L. COLLEGE
ANAKAPALLE



A.M.A.L. COLLEGE

ANAKAPALLE- 531001. Ph.08924 220634

NAAC ACCREDITED B++ GRADE

Mail:amalcollegeakp1953@gmail.com, web:www.amalcollege.edu.in

Dr G.Jaya Babu, M.Sc,M.Phil., Ph.D.

PRINCIPAL (FAC) Ph.No.9490430638

కళాశాలలో విద్యార్థులు శ్రమదానం



కళాశాల ఆవరణను శుభ్రపర్చిన విద్యార్థులు

కొత్తూరు, సెప్టెంబరు 24 : రీసైక్లింగ్కు అవకాశం లేని ప్లాస్టిక్ సంచులు వాడకం ప్రమాదకరమని ఏఎంఏఎల్ కళాశాల ప్రిన్సిపాల్ డాక్టర్ జి.జయబాబు అన్నారు. శని వారం ఎన్ఎస్ఎస్ డే సందర్భంగా కళాశాల ప్రాంగణంలో మొక్కలు నాటి, విద్యార్థులతో కలిసి కళాశాల ప్రాంగణాన్ని శుభ్రం చేశారు. ఉమెన్ ఎంపవర్మెంటు కన్వీనర్ జె.సామ్రాజ్యం, సి.మోహిని, డాక్టర్ సౌజన్య సూపరింటెం డెంట్ పి. అనురాధ తదితరులు పాల్గొన్నారు.

కళాశాలలో విద్యార్థులు శ్రమదానం



కళాశాల ఆవరణను శుభ్రపర్చిన విద్యార్థులు

కొత్తూరు, సెప్టెంబరు 24 : రీసైక్లింగ్కు అవకాశం లేని ప్లాస్టిక్ సంచులు వాడకం ప్రమాదకరమని ఏఎంఏఎల్ కళాశాల ప్రిన్సిపాల్ డాక్టర్ జి.జయబాబు అన్నారు. శని వారం ఎన్ఎస్ఎస్ డే సందర్భంగా కళాశాల ప్రాంగణంలో మొక్కలు నాటి, విద్యార్థులతో కలిసి కళాశాల ప్రాంగణాన్ని శుభ్రం చేశారు. ఉమెన్ ఎంపవర్మెంటు కన్వీనర్ జె.సామ్రాజ్యం, సి.మోహిని, డాక్టర్ సౌజన్య సూపరింటెం డెంట్ పి. అనురాధ తదితరులు పాల్గొన్నారు.

ఆదివారం 25 సెప్టెంబర్ 2022

విజన్

రీసైక్లింగ్కు అవకాశం లేని పలుచని ప్లాస్టిక్ సంచులు వాడకం పెనుప్రమాదం

ఆవరణలో, ప్లాస్టిక్ సంచులను ఏ ఏ ఏ కళాశాలలో శనివారం ఎన్ ఎస్ ఎస్ డే సందర్భంగా కళాశాల ఆవరణలో ఉన్న వ్యర్థ ప్లాస్టిక్ పదార్థాలన్నీ పరి చేయటం జరిగింది. ఈ సందర్భంగా ప్రిన్సిపాల్ డా. జి. జయ బాబు మాట్లాడుతూ ఎన్ఎస్ఎస్, వాలంటీర్స్ అందరినీ ఆహ్వానించారు. కళాశాల కేంద్రంలో ముందుగానే సిస్టర్స్ అందరినీ హిందూస్థాని లో సత్కరించారు. అంతే కాక ఎన్ ఎస్ ఎస్ డే సందర్భంగా ఈ కార్యక్రమం చేపట్టిన ఎన్ ఎస్ ఎస్. అధికారి డా.ఎం.హరిబాబు ను ఆహ్వానించారు. హరిబాబు మాట్లాడుతూ ఎన్ఎస్ఎస్ కే ప్రత్యేక గురించి వివరించి, ప్లాస్టిక్ వస్తువుల కచ్చా ప్లాస్టిక్ సంచుల వాడకమే ప్రమాదం అని వివరించారు. తుదకే ఈ ప్లాస్టిక్ సంచులను అతిగా వాడి, ఎక్కువ వరకే అక్కువ చేయడం, ఏదీ రీసైక్లింగ్ లేని అవకాశం లేకపోవడం వల్ల భవిష్యత్తులో పెను ప్రమాదమే ఎదురవుతుందని అన్నారు. తదుపరి కళాశాల ఆవరణలో మొక్కలను నాటారు ఈ



కార్యక్రమంలో వాలంటీర్స్, ఉమెన్ ఎంపవర్మెంట్ కన్వీనర్ జె సామ్రాజ్యం, సి. మోహిని, డా. సౌజన్య, సూపరింటెండ్ డెంట్ పి. అనురాధ పాల్గొన్నారు

మాట్లాడుతూ ఈ రేయూత పతకాన్ని ఉప ముఖ్యమంత్రి ముఖ్యమంత్రి

ప్లాస్టిక్ వస్తువులు వినియోగించొద్దు

కొత్తూరు (అనకాపల్లి), స్యూస్టుడే: ప్రజలకు అన్ని అంశాల్లో అవగాహన కల్పించి, వారిలో ఖైతన్యం తీసుకురావడానికి విద్యార్థులు కృషి చేయాలని ఏఎంఏఎల్ కళాశాల ప్రిన్సిపాల్ డాక్టర్ గెల్లా జయబాబు కోరారు. జాతీయ సేవా పథకం దినోత్సవం సందర్భంగా అనకాపల్లి ఏఎం ఏఎల్ కళాశాల ఎన్ఎస్ఎస్ ఆధ్వర్యంలో శని వారం ప్లాస్టిక్పై అవగాహన కల్పించారు. ఎన్ సీసీ అధికారి డాక్టర్ డాక్టర్ హరిబాబు ఆధ్వర్యంలో పారిశుధ్యం మెరుగు కృషి చేస్తున్న ఉత్తమ ఉద్యోగులను సత్కరించారు. సామ్రాజ్యం, మోహిని, సౌజన్య, అనురాధ తదితరులు పాల్గొన్నారు.



Gama M.
PRINCIPAL
A.M.A.L. COLLEGE
ANAKAPALLE



A.M.A.L. COLLEGE

ANAKAPALLE- 531001. Ph.08924 220634

NAAC ACCREDITED B++ GRADE

Mail: amalcollegeakp1953@gmail.com, **web:** www.amalcollege.edu.in

Dr G.Jaya Babu, M.Sc,M.Phil., Ph.D.

PRINCIPAL (FAC) Ph.No.9490430638

ప్లాస్టిక్ వినియోగంతో పర్యావరణానికి నష్టం

తుమ్మపాల: రీసైక్లింగ్కు అవకాశం లేని ప్లాస్టిక్ వినియోగం వల్ల పర్యావరణానికి నష్టమని ఏఎంఏఎల్ కళాశాల ప్రిన్సిపాల్ డా.జి.జయబాబు అన్నారు. అనకాపల్లి మండలం కొత్తూరు ఏఎంఏఎల్ కళాశాలలో ఎన్ఎస్ఎస్ దినోత్సవం సందర్భంగా కళాశాల ఆవరణలో వ్యర్థాలను శుభ్రం చేసి మొక్కలు నాటారు. ఈ సందర్భంగా ఆయన మాట్లాడుతూ ప్లాస్టిక్ వస్తువుల కన్నా ప్లాస్టిక్ సంచుల వాడకమే ప్రమాదమని, పలుచగా ఉండటం చేత ఎక్కడపడితే అక్కడ పడేయటం వల్ల రీసైక్లింగ్కు అవకాశం లేకుండా ఆవుతుందన్నారు. ఎన్ఎస్ఎస్ అధికారి డా.ఎం.హరిబాబు మాట్లాడుతూ ప్లాస్టిక్ వాడకాన్ని నియంత్రించి భవిష్యత్ తరాలకు కాలుష్యం లేని సమాజాన్ని అందించాలని కోరారు. అంతకుముందు కళాశాలలో పనిచే



ఏఎంఏఎల్ కళాశాలలో ప్లాస్టిక్ వ్యర్థాలను శుభ్రం చేస్తున్న ఎన్ఎస్ఎస్ వలంటీర్లు

స్తున్న స్వీపర్లకు పుష్పగుచ్ఛాలతో సత్కరించి వందలు అందజేశారు. ఈ కార్యక్రమంలో మహిళా ఎంపవర్ మెంట్ కన్వీనర్ జె.సామ్రాజ్యం, సి.మోహిని, సౌజన్య, సూపరింటెండెంట్ పి.అనురాధ ఎన్ఎస్ఎస్ వలంటీర్లు పాల్గొన్నారు.



Gana M.L.
PRINCIPAL
A.M.A.L. COLLEGE
ANAKAPALLE



A.M.A.L. COLLEGE

ANAKAPALLE- 531001. Ph.08924 220634

NAAC ACCREDITED B++ GRADE

Mail: amalcollegeakp1953@gmail.com, web: www.amalcollege.edu.in

Dr. G.Jaya Babu, M.Sc., M.Phil., Ph.D.

PRINCIPAL (FAC) Ph.No.9490430638

Anakapalle Merchants' Association Lingamurthy College

RC. No.



Phones : 23269 & 22634

ANAKAPALLE - 531 001

Date 29-9-2022

Circular

All the students are hereby informed to participate in Awareness Campaign of Single Use Plastic scheduled on 01-10-2022 in large number to make the program successful under the clean and green initiatives.


PRINCIPAL
A.M.A.L. COLLEGE
ANAKAPALLE



A.M.A.L. COLLEGE

ANAKAPALLE- 531001. Ph.08924 220634

NAAC ACCREDITED B++ GRADE

Mail: amalcollegeakp1953@gmail.com, web: www.amalcollege.edu.in

Dr G.Jaya Babu, M.Sc,M.Phil., Ph.D.

PRINCIPAL (FAC) Ph.No.9490430638

AWARENESS CAMPAIGN OF SINGLE USE PLASTIC AND CLEAN AND GREEN PROGRAM– 01.10.2022



Jana M.L.S.
PRINCIPAL
A.M.A.L. COLLEGE
ANAKAPALLE



A.M.A.L. COLLEGE

ANAKAPALLE- 531001. Ph.08924 220634

NAAC ACCREDITED B++ GRADE

Mail: amalcollegeakp1953@gmail.com, **web:** www.amalcollege.edu.in

Dr G.Jaya Babu, M.Sc,M.Phil., Ph.D.

PRINCIPAL (FAC) Ph.No.9490430638

REPORT OF ACTIVITIES FOR THE IMPLEMENTATION OF INITIATIVES



Jana M.L.
PRINCIPAL
A.M.A.L. COLLEGE
ANAKAPALLE



A.M.A.L. COLLEGE

ANAKAPALLE- 531001. Ph.08924 220634

NAAC ACCREDITED B++ GRADE

Mail:amalcollegeakp1953@gmail.com, **web:**www.amalcollege.edu.in

Dr G.Jaya Babu, M.Sc,M.Phil., Ph.D.

PRINCIPAL (FAC) Ph.No.9490430638

REPORT OF ACTIVITIES FOR THE IMPLEMENTATION OF INITIATIVES

Solar Energy: It reduces the institutions carbon foot print and save money on energy costs.

It focus on energy efficiency in the future.

Use of LED lights: LED lights are energy efficient, environment- friendly, produce less heat, maintenance –free, long spam and durable as compared to fluorescent tube lights.

Solid waste management: the complete processing of collecting, treating and disposing of solid wastes.in this waste management process our college students involves daily.

Liquid waste management: Liquids as waste water, used oils are Harmful to human health or the environment, so that our college follows the below liquid waste management methods.

- Dewatering
- Sedimentation
- Composting
- Root – zone treatment

Electronic waste management: It is a process to collect e-waste by suitable techniques to reduce its adverse impacts on environment. Our college methodology is refuse, reduce, repurpose, and finally recycle.

Hazardous chemicals: We aware to students change process to minimize contact with hazardous chemicals, isolate or enclose the process, general dilution, ventilation, use fume hoods.

Rain water harvesting: Our college follows store rain water in drums. Direct rain water run off to plants, preparing recharge pits.

Open well recharge: We use the cavity (well) in the earth to push the water collected from clean catchments like rooftops in to the ground.

Water bodies (Mineral water): Mineral water of this group are characterized by great diversity of chemical composition, mineralization, So that H_2S and HS concentration, so that the college provides Reverse Osmosis plant (RO).The capacity of this plant near to 1000 liters.



Gana H. S.
PRINCIPAL
A.M.A.L. COLLEGE
ANAKAPALLE



A.M.A.L. COLLEGE

ANAKAPALLE- 531001. Ph.08924 220634

NAAC ACCREDITED B++ GRADE

Mail:amalcollegeakp1953@gmail.com, **web:**www.amalcollege.edu.in

Dr G.Jaya Babu, M.Sc,M.Phil., Ph.D.

PRINCIPAL (FAC) Ph.No.9490430638

Green Campus Initiation: Our college GCI follows major criteria are energy conversation, interior, indoor comfort, and material. These criteria filled through

(a)Restrictions of automobiles: - Our College encourages the staff and students to use the college transport instead of their own vehicles for safety, security, fuel, conservation and to reduce environmental pollution. The vehicles owned by the faculty or students with pollution check stickers are permitted in to the campus. Random checks are made to check the validation and periodicity of this certificate. For two wheelers or four wheelers, security measures are mandatory.

Use of Bicycles: Students and staff coming from nearby villages also prefer bicycles as a mode of transport for attending the college. It is environment friendly and prevents pollution.

Pedestrian friendly pathways: Vehicle parking space is provided at the main entrance of the college campus. As the campus is vehicle free with some exceptions, student and staff experience comfort walking through the pedestrian friendly pathways.

Ban on usage of plastic: Single use plastic items such as plastic bottles, bags, spoons, straws and cups are banned completely and awareness is created among the staff and students through orientation and display boards in the premises. To restrict the use of plastic, measures have been taken to replace plastic tea cups and glasses with steel glasses in the canteen. Different awareness programme to spread awareness about green environment held for the people of the nearby community in regular basis. The staff and students are informed to use steel or copper water bottles instead of plastic bottles.

Landscaping with trees and plants: landscaping of the college is worth seeing reflects aesthetic sense. The institute has a canopy of trees and plants to make the environment pollution free to safe guard the health of the inmates. The lawns and the trees provide shade and beautiful ambience.

Wheel chair: Stephan Farffler designed the world's first self-propelling chain .Now it develops in to power wheel chairs.

College students with physical disabilities using wheel chairs. It overcomes the obstacles when Trans portioning to an institution. It is provision for time management factor.



Jaya Babu
PRINCIPAL
A.M.A.L. COLLEGE
ANAKAPALLE



A.M.A.L. COLLEGE

ANAKAPALLE- 531001. Ph.08924 220634

NAAC ACCREDITED B++ GRADE

Mail: amalcollegeakp1953@gmail.com, **web:** www.amalcollege.edu.in

Dr G.Jaya Babu, M.Sc,M.Phil., Ph.D.

PRINCIPAL (FAC) Ph.No.9490430638

BILLS

FOR THE PURCHASE OF EQUIPMENT FOR THE FACILITIES



Gana H.S.
PRINCIPAL
A.M.A.L. COLLEGE
ANAKAPALLE

(ORIGINAL FOR RECIPIENT)

Destination

Scanned with CamScanner

The Anakapalle Merchant's Association Lingamurthy College
(NAAC ACCREDITED GRADE B++)
ANAKAPALLE

No. of Sub Voucher	Description of charge and No. and date of authority where special sanction is necessary	Amount Rs. Ps.	
	<p>Payable to Sri Sai Krishna Enterprises.</p> <p>towards college campus street lights.</p> <p>Received chik. 001010 9880/-</p> <p>K. Sanyal 24/05/22 9381641361</p>	9880/-	
	Total :	9880/-	

Total (in words) Rs. Nine thousand eight hundred and eighty only.

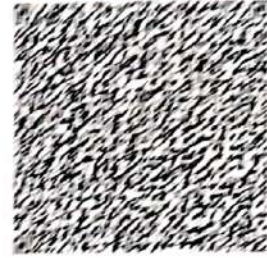
Station : Anakapalle
Dated

[Signature]
Principal
A.M.A.C. COLLEGE
ANAKAPALLE
20/5/22

[Signature]
President
A.M.A.C. COLLEGE
ANAKAPALLE

[Signature]
Correspondent
A.M.A.C. COLLEGE
ANAKAPALLE

37AANCA2455R1ZY
AMEYA SOLAR AND SEMICONDUCTORS PRIVATE LIMITED



1. e-Invoice Details

IRN:

4703c3b68f317d6a2941b8ce19c777a55
9c9d15392aff06ef0a6eafe7b13cAe8ba2

Ack. No: 112418745667224

Ack. Date: 03/01/2024 05:13:55

2. Transaction Details

Supply Type Code: B2B

Document No: 63

IGST applicable despite Supplier
and Recipient located in same State. No.

Place of Supply: ANDHRA PRADESH

Document Type: Tax Invoice

Document Date: 03/01/2024

3. Party Details

Supplier:

GSTIN: 37AANCA2455R1ZY
AMEYA SOLAR AND SEMICONDUCTORS PRIVATE LIMITED
NEAR MARIDIMAMBA TEMPLE 161/1/1A RAJPETA
ROAD, NAGAVARAM VILAGE
MUNAGAPAKA MANDALAM, 531033, ANDHRA PRADESH

Recipient:

GSTIN: 37ARTPP4014F1ZL
PENTAKOTA SILVER PALACE
12-11-2/1 CHINTHAVARI VEEDHI
Place of supply: ANDHRA PRADESH
ANAKAPALLI, 531001, ANDHRA PRADESH

4. Details of Goods / Services

Sl No	Item Description	HSN Code	Quantity	Unit Price (Rs)	Discount (Rs)	Taxable Amount	Tax Rate(GST + Cess State Cess + Cess Non-Advol)	Other Charges (Rs)	Total
1	10kw solar on grid system..	85414012	1	283000	0	283000	12 + 0 0 + 0	0	316960
Taxable Amt	CGST Amt	SGST Amt	IGST Amt	CESS Amt	State CESS Amt	Discount	Other Charges	Round Off Amt	Total Inv. Amt
283000	16980	16980	0	0	0	0	0	0	316960

5. Eway Bill Details

EWB No.: 181776638706

EWB. Date: 03/01/2024

Valid Till Date: 04/01/2024

Generated By: 37AANCA2455R1ZY

Print date: 03/01/2024 05:13:47



112418745667224

eSign

Digitally signed by NIC-IRP
On: 03/01/2024 05:13:00



Principal
A.M.A.L. COLLEGE
ANAKAPALLE

Sri Sai Krishna Enterprises-(19-20)
12-4-118,
Opp Axis Bank, Near RTC Complex
Anakapalle, PH 08924-224592
Visakhapatnam
GSTIN/UIN: 37ADEF54672B1Z3
State Name: Andhra Pradesh, Code: 37
E-Mail: saikrishna.anakapalli@gmail.com

Buyer

A.M.A.L. DEGREE COLLEGE

ANAKAPALLI

State Name: Andhra Pradesh, Code: 37

Invoice No 1983	Dated 20-Oct-2020
Delivery Note	Mode/Terms of Payment
Supplier's Ref	Other Reference(s)
Buyer's Order No	Dated
Despatch Document No	Delivery Note Date
Despatched through	Destination
Terms of Delivery	

Sl No	Description of Goods	HSN/SAC	GST Rate	Quantity	Rate	per	Amount
1	18W CEILING LIGHT SQUARE DURA-C.G	3405	12 %	3.00 NUM'S	602.68	NUM'S	1,808.04
2	12W CEILING LIGHT ROUND DURA-C.G	3405	12 %	3.00 NUM'S	517.86	NUM'S	1,553.58
3	20W LED TUBE LIGHT-C.G	3405	12 %	5.0000 Nos.	258.93	Nos	1,294.65
4	36W LED TUBE LIGHT-C.G	3405	12 %	1.0000 Nos.	437.50	Nos	437.50
5	9W LED B22-C.G	8539	12 %	3.0000 Nos.	98.21	Nos	294.63
6	Tape Roll	8546	18 %	2.0000 Nos.	8.47	Nos	16.94
							5,405.34
							CGST OUTPUT 324.82
							SGST OUTPUT 324.82
							ROUNDED OFF RS. 0.02

Total

₹ 6,055.00

E & O E

Amount Chargeable (in words)

INR Six Thousand Fifty Five Only

Taxable Value	Central Tax Rate	Central Tax Amount	State Tax Rate	State Tax Amount	Total Tax Amount
5,388.40	6%	323.30	6%	323.30	646.60
16.94	9%	1.52	9%	1.52	3.04
Total: 5,405.34		324.82		324.82	649.64

Tax Amount (in words)

INR Six Hundred Forty Nine and Sixty Four paise Only

Remarks

CREDIT SALE

Declaration

We declare that this invoice shows the actual price of the goods described and that all particulars are true and correct

Company's Bank Details

Bank Name: **THE FEDERAL BANK LTD**A/c No: **13535500002183**Branch & IFS Code: **ANAKAPALLI & FDRL0001353**

for Sri Sai Krishna Enterprises

Authorised Signa

This is a Computer Generated Invoice



AMAL COLLEGE,

ANAKAPALLE,

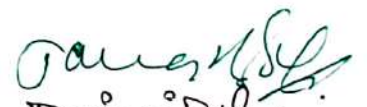

DT:- 21/10/2020.

Note Submitted to the Correspondent.

Sir,

we submit that, we have to pay the
amount Rs:- 6,055/- towards cost of
Purchase of Electronics items. in B& I room
we request you to sanction amount
Rs:- 6,055/- to Sri Sai Krishna Enterprises.

Cheque NO:- 000718.


Principal.



21/10/20

ANAKAPALLE.

Total (in words) Rs. six thousand and fifty five only.

Dated

Correspondent
Correspondent
A.M.A.L. COLLEGE
ANAKAPALLE

~~Postgraduate~~

~~Development Fund A/c~~ ✓

~~U.G / P.G Self Fund A/c.~~

~~Management A/C /~~

~~Special Fee A/C /~~

~~Scholarship A/C.~~

Bill No. 64 / 2020 - 21.

Date 21/10/2020.

Rs. 6,055/-

In favour of Sri Sai Krishna
Enterprises.

towards Cost of Purchase
Electronics items in GB &
ICT Rooms.

Cheque No. 000718 / KVB.

Date 21/10/2020.

A.M.A.L. COLLEGE, ANAKAPALLE

STATEMENT SHOWING THE EXPENDITURE GROUND WELL

S.NO	DATE		Ground Well	Total
1	17-10-2018	V.Sati Babu	15500.00	15500.00
2	17-10-2018	V.Sati Babu	400.00	400.00
3	03-11-2018	V.Sati Babu	16000.00	16000.00
4	19-11-2018	V.Sati Babu	6220.00	6220.00
5	29-11-2018	V.Sati Babu	8800.00	8800.00
		Total	46920.00	46920.00




PRINCIPAL
A.M.A.L. COLLEGE
ANAKAPALLE

VOUCHER

No.

①

To,

The Principal,
A.M.A.L. College,
Anakapalle.

Department

Date : 17/10/2018

Received Cash Dated 17-10-2018 Rs. 15500 Ps.

(Rupees fifteen Thousand and five hundred)

) paid to me/us towards (Purpose) Office Back

side for Panoz Kodu, M.S. Groundwell

Purpose Varkasattibatu

Signature or L.T.I

VOUCHER

No.

②

To,

The Principal,
A.M.A.L. College,
Anakapalle.

Department

Date : 17.10.2018

Received Cash Dated 17-10-2018 Rs. 400/- Ps.

(Rupees Four hundred only)

) paid to me/us towards (Purpose) Two follicles

for Groundwell

22.500000

Varkasattibatu.

Signature or L.T.I

VOUCHER

No.

3

To,

The Principal,
A.M.A.L. College,
Anakapalle.

Department

Date 30/11/2018

Received Cash Dated 30/11/2018 Rs. 16000/- Ps.

(Rupees

Between Hinduramb Nela

) paid to me/us towards (Purpose)

Rs. 16000/-

P.G. Hostel or vocational building Ground well
Varlasattibabu

Signature or L.T.I

VOUCHER

No.

4

To,

The Principal,
A.M.A.L. College,
Anakapalle.

Department

Date 29/11/2018

Received Cash Dated 29/11/2018 Rs. 8,800/- Ps.

(Rupees

Eight thousand and eight hundred

) paid to me/us towards (Purpose)

Rs. 8800/-

Purpose of Ground well

financial settlement

Signature or L.T.I

PAID

CANCELLED

VOUCHER

No.

5

To,

The Principal,
A.M.A.L. College,
Anakapalle.

Department

Date : 19.11.2016

Received Cash Dated 19.11.18 Rs. 6220/- Ps.

(Rupees Six thousand two hundred and twenty)

) paid to me/us towards (Purpose) at Hotel

for two Poojae of Ground well

Naraka Sattibabu

XGALD, S29

Signature or L.T./

538
FILED